



REGIONAL SPECIALISED METEOROLOGICAL CENTRE -TROPICAL CYCLONES, NEW DELHI TROPICAL WEATHER OUTLOOK

DEMS-RSMC TROPICAL CYCLONES NEW DELHI DATED 02.08.2025

TROPICAL WEATHER OUTLOOK FOR THE NORTH INDIAN OCEAN (THE BAY OF BENGAL AND THE ARABIAN SEA) VALID FOR THE NEXT 168 HOURS ISSUED AT 0600 UTC OF 02.08.2025 BASED ON 0300 UTC OF 02.08.2025.

LAND:

Yesterday's upper air cyclonic circulation over Sub-Himalayan West Bengal & Sikkim & neighbourhood now lay over the east Bihar & adjoining Sub-Himalayan West Bengal & Sikkim and extend upto 5.8 km above mean sea level tilting southwestwards with height at 0300 UTC of today, the 02nd August, 2025.

BAY OF BENGAL:

Scattered to broken low and medium clouds with embedded intense to very intense convection lay over south Bay of Bengal south of latitude 11.0 °N south Andaman Sea and moderate to intense convection lay over northeast Bay of Bengal. Scattered low and medium clouds with embedded isolated weak to moderate convection lay over rest Bay of Bengal.

An upper air cyclonic circulation lay over Gulf of Mannar & adjoining south Tamil Nadu at 5.8 km above mean sea level.

***PROBABILITY OF CYCLOGENESIS (FORMATION OF DEPRESSION) DURING NEXT 168 HRS:**

24 HOURS	24-48 HOURS	48-72 HOURS	72-96 HOURS	96-120 HOURS	120-144 HOURS	144-168 HOURS
NIL	NIL	NIL	NIL	NIL	NIL	NIL

***NOTE: EVERY 24HR FORECAST IS VALID UPTO 0300 UTC (0830 IST) OF NEXT DAY**

ARABIAN SEA:

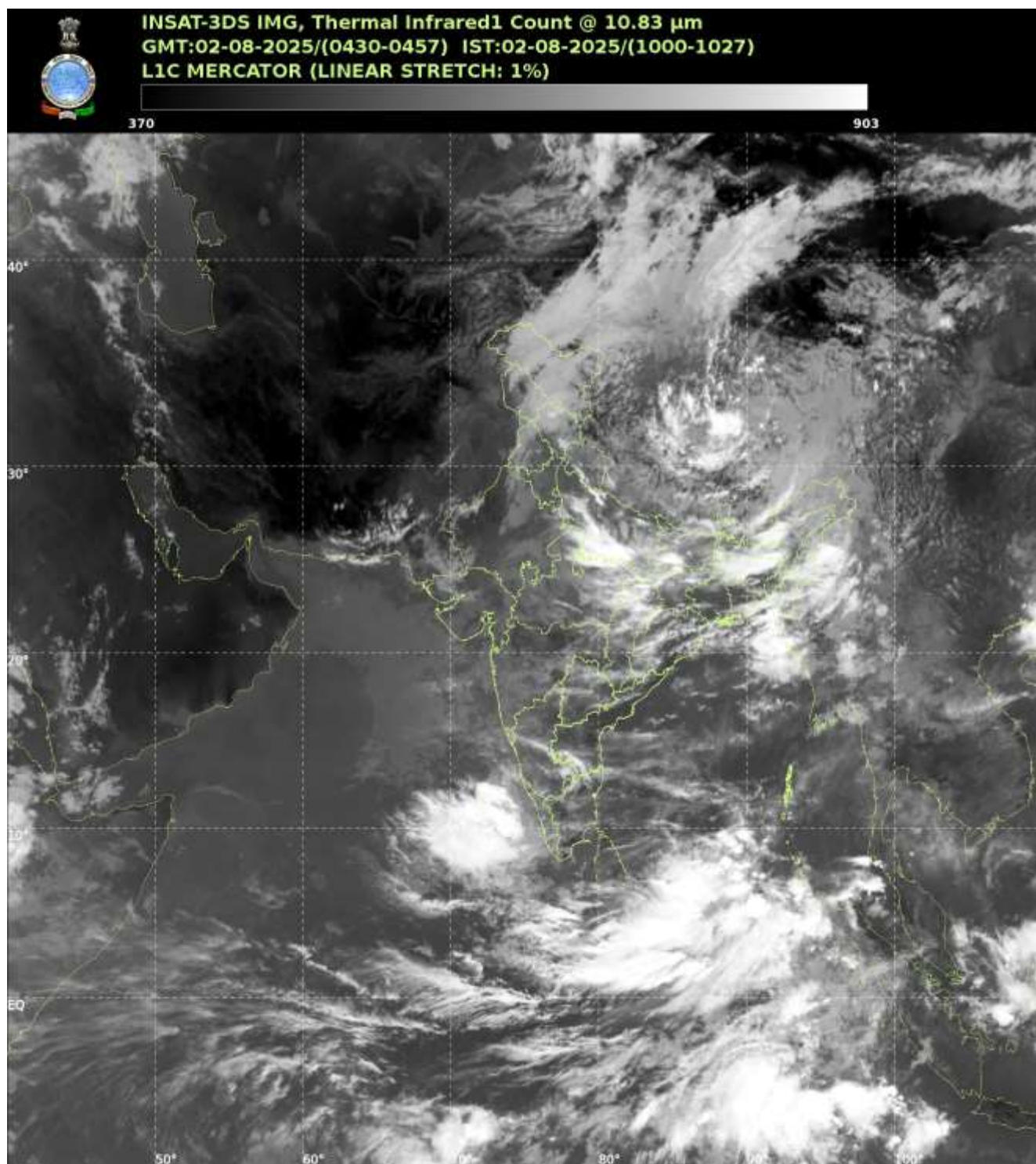
Scattered low and medium clouds with embedded intense to very intense convection lay over southeast Arabian Sea, Lakshadweep Islands & sea area, Maldives and Comorin area. Scattered low and medium clouds with embedded moderate to intense convection lay over southwest & central Arabian Sea. Scattered low and medium clouds with embedded weak to moderate convection lay over rest of Arabian Sea.

***PROBABILITY OF CYCLOGENESIS (FORMATION OF DEPRESSION) DURING NEXT 168 HRS:**

24 HOURS	24-48 HOURS	48-72 HOURS	72-96 HOURS	96-120 HOURS	120-144 HOURS	144-168 HOURS
NIL	NIL	NIL	NIL	NIL	NIL	NIL

***NOTE: EVERY 24HR FORECAST IS VALID UPTO 0300 UTC (0830 IST) OF NEXT DAY**

REMARKS: NIL



Cloud distribution: (a) Isolated: <25%, Scattered:25-50%, Broken: 51-75%, Solid:>75%, Convection Intensity: (a) Weak: Cloud Top Temperature(CTT)>-25°C,(b)Moderate:CTT:-25°Cto-40°C,(c)Intense:CTT: -41°Cto -70°Cand(d)Very Intense::Less than -70°C
 PROBABILITYOFCYCLOGENESIS(FORMATIONOFDEPRESSION):NIL:0%,LOW:1-33%,MODERATE:34-66%ANDHIGH:67-100%
 ThisisaguidanceBulletinforWMO/ESCAPPanelMembercountries.VisitrespectiveNationalwebsitesforCountryspecificBulletins